



Programming Manual

iCOM repeater

Version 0.3 | April 2021

Telecommunications Security Standards {TESS+}

www.wfp.org/telecommunications-security-standards

tess@wfp.org

Table of Contents

| | |
|---|----------|
| Table of Contents | 2 |
| Introduction | 3 |
| In this Guide | 3 |
| Other Information Resources | 3 |
| Technical Support | 3 |
| Training | 3 |
| Repeater models covered by this manual | 4 |
| Repeaters | 4 |
| Items needed for programming | 5 |
| Programming Cables..... | 5 |
| Programming Software | 6 |
| Configuring the ICOM programming software..... | 7 |
| ICOM CS-FR5000(dPMR) | 7 |
| Connecting the Radio to the programming software | 7 |
| Programming repeaters..... | 8 |
| Reading, Writing and Cloning | 8 |
| Reading the repeater | 8 |
| Writing the repeater | 8 |
| Cloning the repeater | 9 |

Introduction

This manual is intended for use by radio technicians who are familiar with similar type of repeaters equipment. It contains service information required for the equipment described that gives technicians the skills to program iCOM repeaters equipment properly

In this Guide

This programming manual covers the basic operation of programming iCOM repeaters. It provides guidance on using the programming software for iCOM repeaters.

Other Information Resources

NA

Technical Support

Technical support is available to assist the technician in resolving any malfunction which may be encountered. Initial contact should be by electronic mail or opening a ticket wherever possible. When contacting Technical Support, be prepared to provide the radio model and serial number.

Training

Contact {TESS+} or the ETC training teams.

Repeater models covered by this manual

Repeaters

ICOM repeater IF-FR5100D220VG for VHF



Items needed for programming

Programming Cables

OPC-1122U



Programming Software

CS-FR5000(dPMR) Revision 2.30*Applicable radios:***iCOM repeater IF-FR5100 series***Operating systems:*

Win7 and Win10

CS-FR5000(dPMR)

Revision 2.30

Cloning Software for IC-FR5000 Series

(C) 2010 - 2015 Icom Inc.

Contact tess@wfp.org for guidance on how to access the programming software.

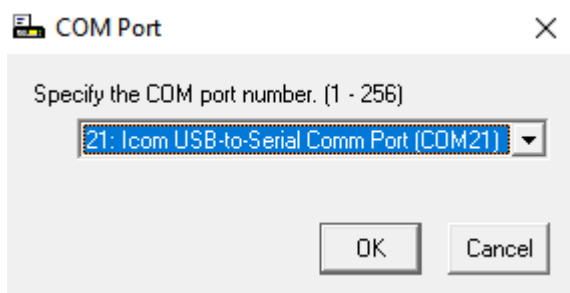
Configuring the iCOM programming software

iCOM CS-FR5000 (dPMR)

Connecting the radio to the programming software

Once the CS-FR5000 (dPMR) has been installed on your computer, open it and make the following changes:

- Connect your radio via the appropriate USB cable (as specified above) to your computer.
- Select the right COM Port, **COM Port ▶ Port Select**

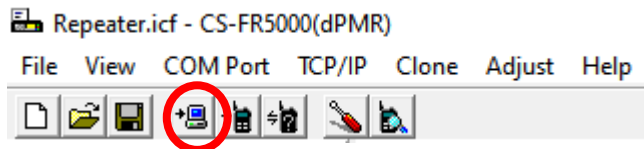


Programming repeaters

Reading, Writing and Cloning

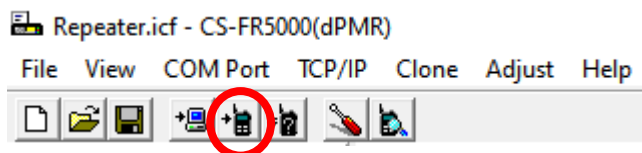
Reading the repeater

- Click on the **Read** icon once the radio has been connected to the computer.



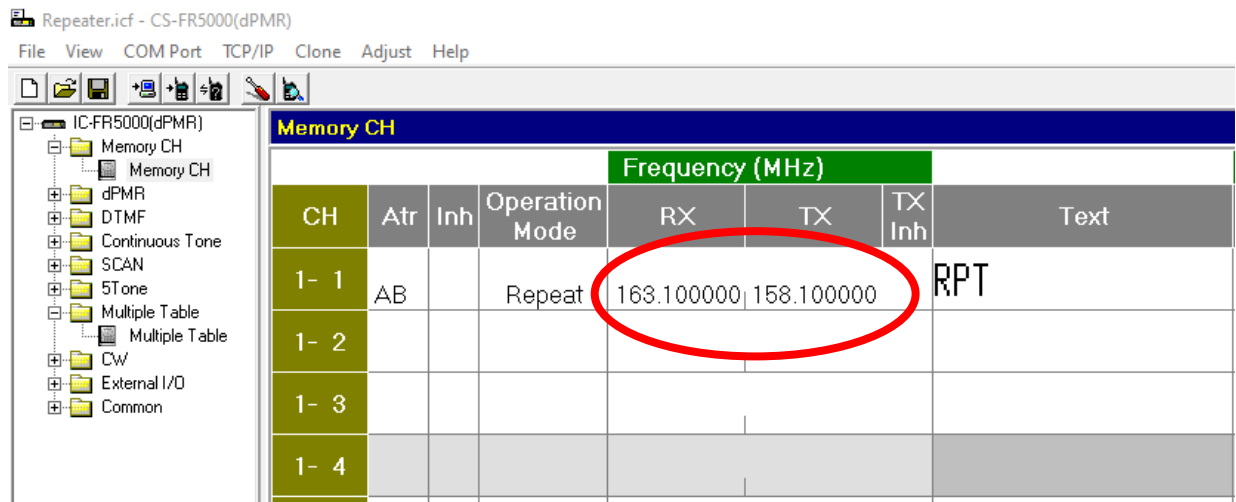
Writing the repeater

- Write** is used to send a configuration or codeplug to the radio (check with your colleagues or email tess@wfp.org to request a copy of the UN standard codeplug).

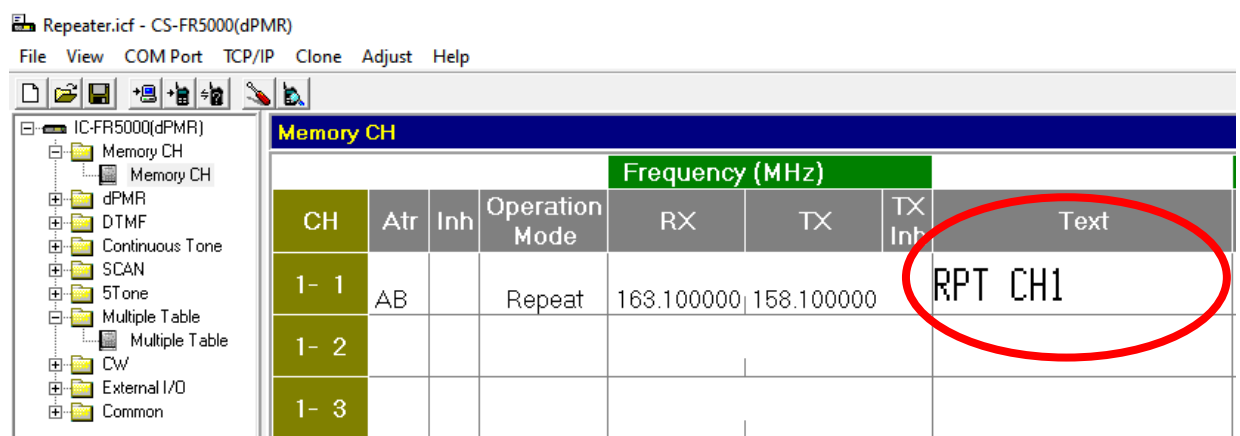


Cloning the repeater

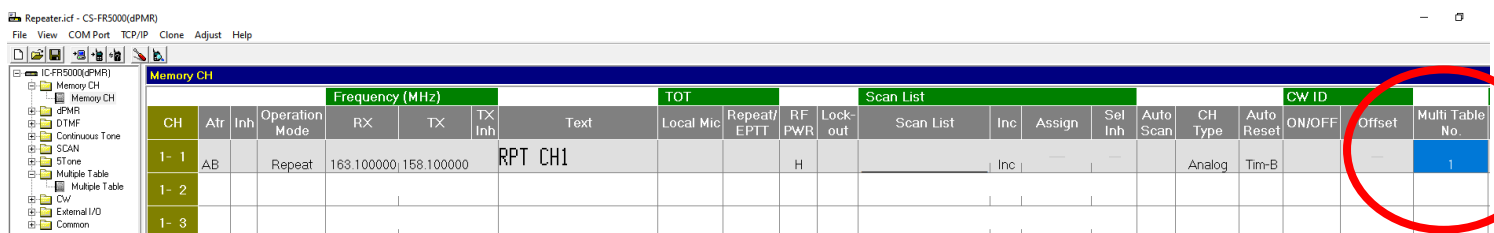
- Make a new programming file for repeater from scratch, **File ▶ New**



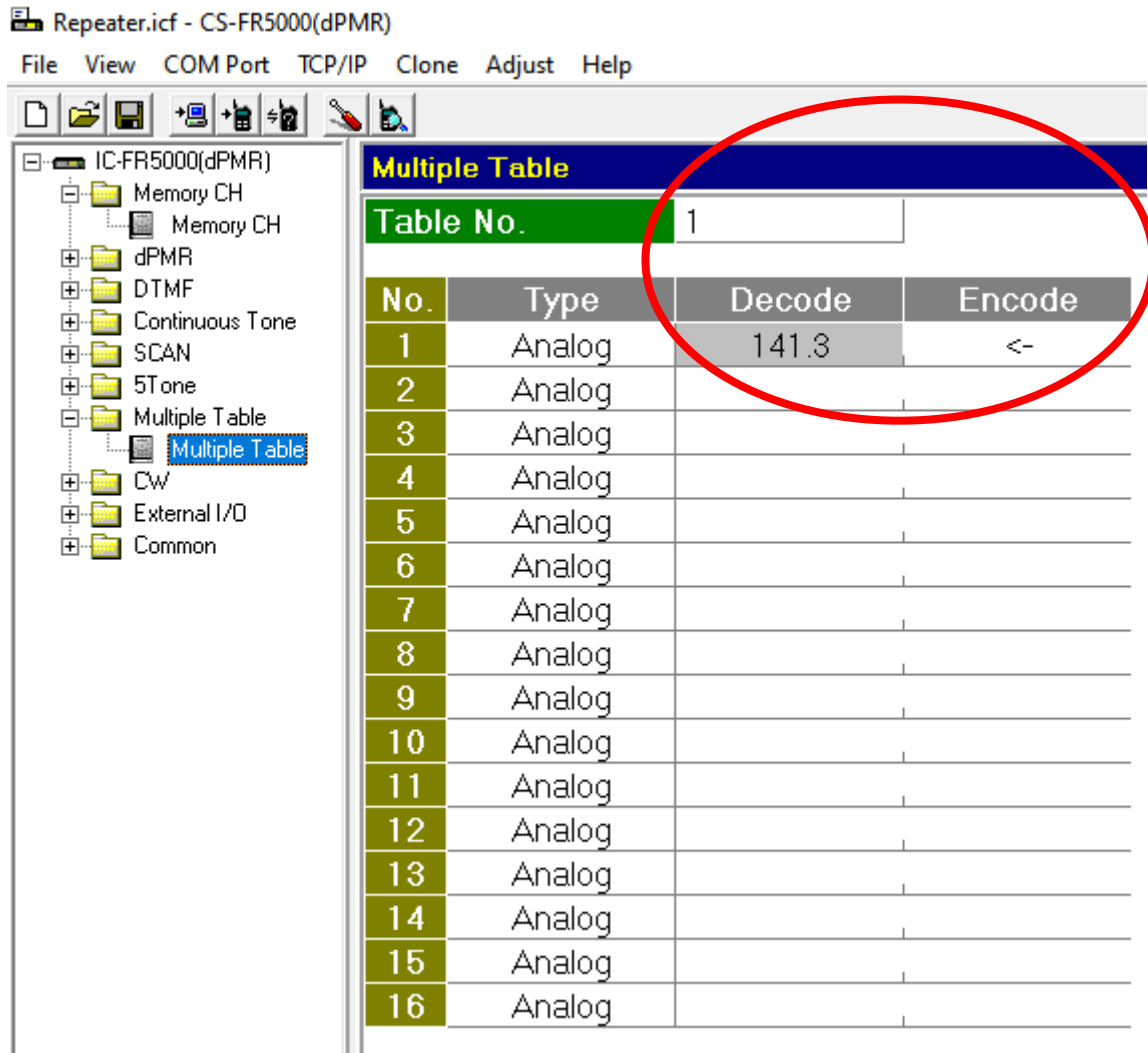
- Enter the desired frequencies
- Select the **Operation mode ▶ Repeat**
- Select **Ch Type ▶ Analog**
- Change the Channel name



- Select **Multi Table No. ▶ 1**



- **Multiple table ▶ Multiple Table ▶ Table No.1**, select the correct Rx and Tx CTCSS:
 - a. Type: Analog
 - b. Decode: 141.3Hz
 - c. Encode: 141.3Hz



- Once complete, **write** the codeplug to the repeaters.